



NEXUM



RESOURCES

UNCOVERING EARTH'S TREASURES





ABOUT US



Nexum Resources is a geological exploration company focused on the discovery and development of natural resources, with a focus on critical and strategic minerals.



Nexum stands out for its commitment to transparency and seriousness in the development of mineral exploration projects.





OUR TEAM



David
Pevcic

Non-executive
Director



José
Marques

Exploration
Director



Caio
Barbosa

Commercial
Director



Marcelo
Gomes

Geological Exploration
Coordinator



GOALS AND OBJECTIVES

Sustainable Exploration

To pursue the exploration of natural resources in a responsible and sustainable manner, minimizing environmental impacts.

Process Innovation

To implement and promote technological innovations in mineral exploration and development processes, aiming for efficiency and safety.

Community Development

To contribute to the economic and social growth of the communities where it operates, promoting local development and respecting regional cultures.

Operational Excellence

To ensure that its operations meet the highest standards of quality, safety, and regulatory compliance.

Resource Valuation

To maximize the value of mineral resources through advanced geological and mineral engineering techniques.

Training and Capacity Building

To invest in the training of employees and local communities, fostering the development of skills related to the mining sector.



VALUES

Mission



To explore and develop natural resources sustainably, promoting economic and social growth while respecting the environment and the communities where it operates. Nexum aims to add value to the mining sector by ensuring responsible and innovative practices in its projects.

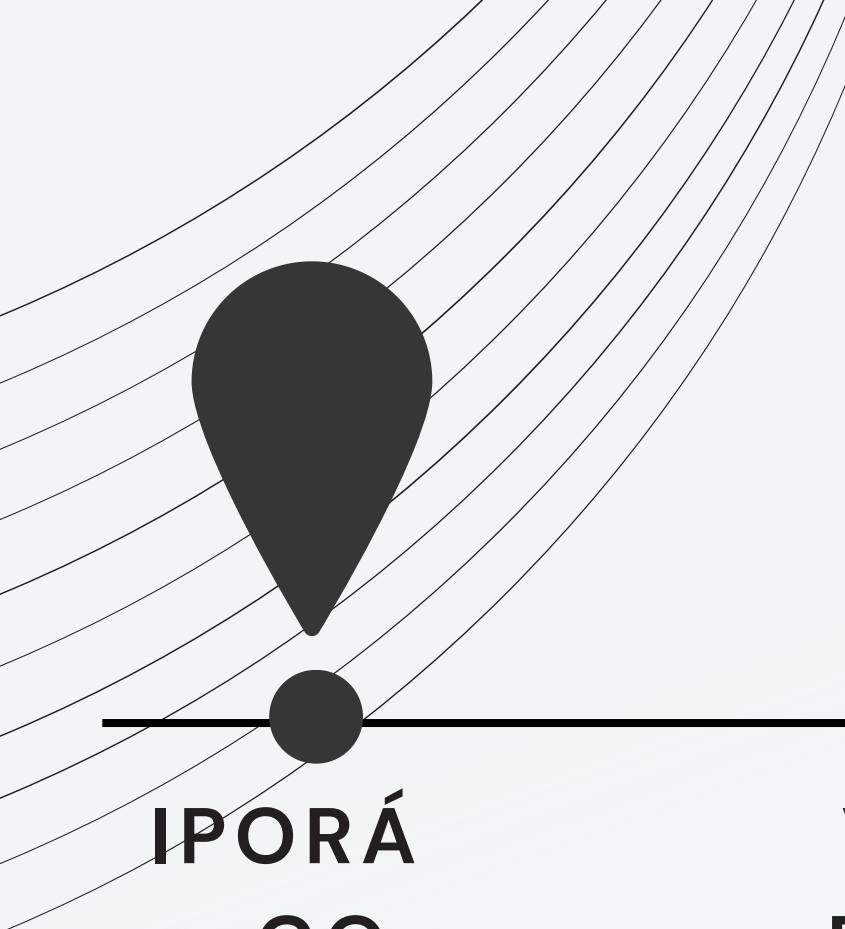
To be a leader in innovation in mineral exploration, ensuring safety, efficiency, and sustainability. The company aspires to be recognized for its excellence in processes and its positive contribution to the development of the regions in which it operates.

Vision





NEXUM RESOURCES' PROJECTS



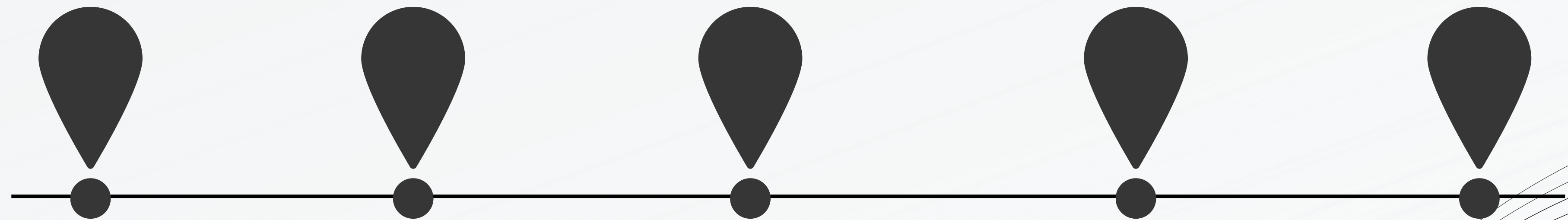
IPORÁ
- GO

**VALE DO
RIBEIRA -
SP**

DIANÓPOLIS
- TO

COLNIZA
- MT

**COLORADO
DO OESTE
- RO**



URUCARÁ
- AM

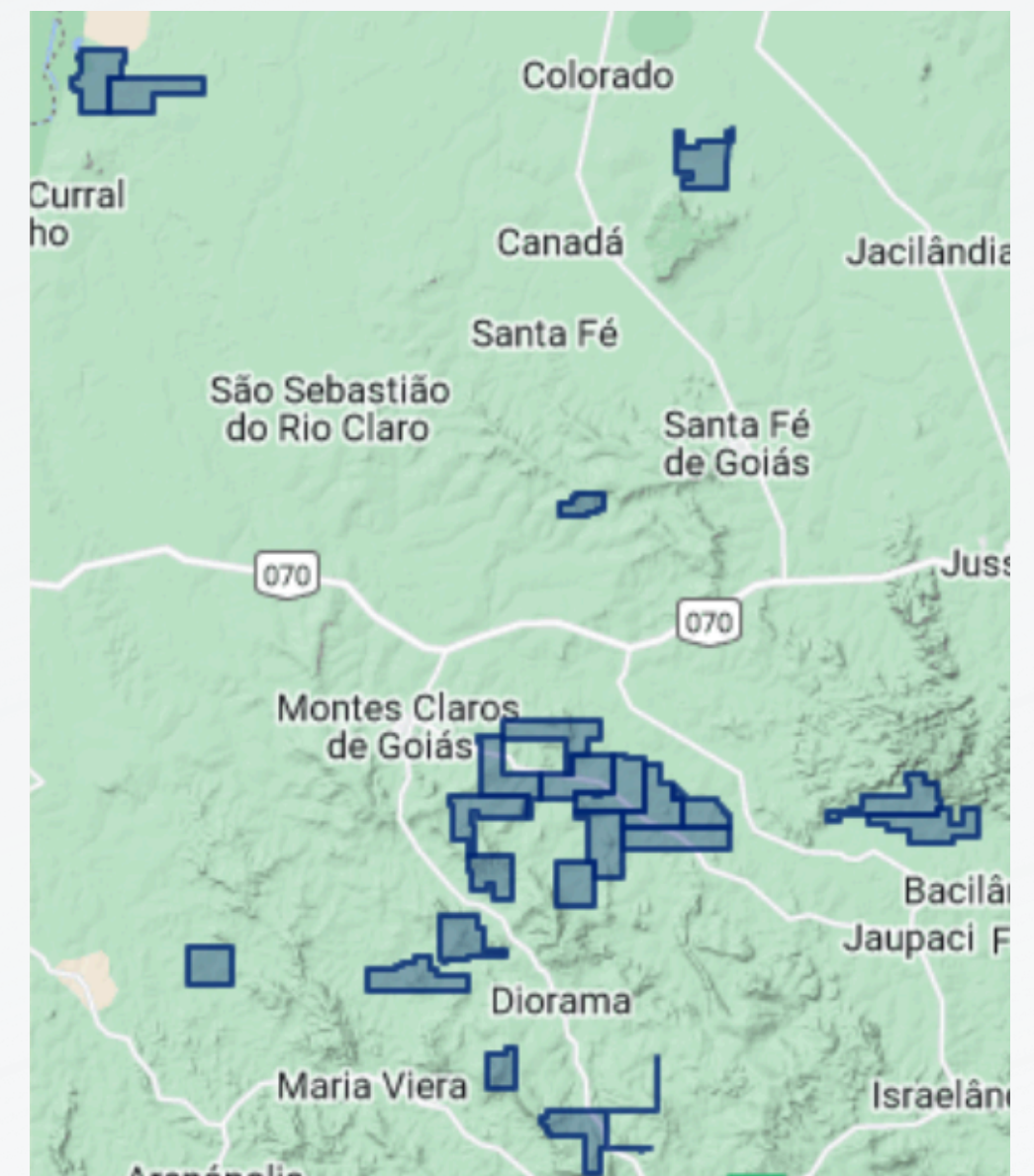
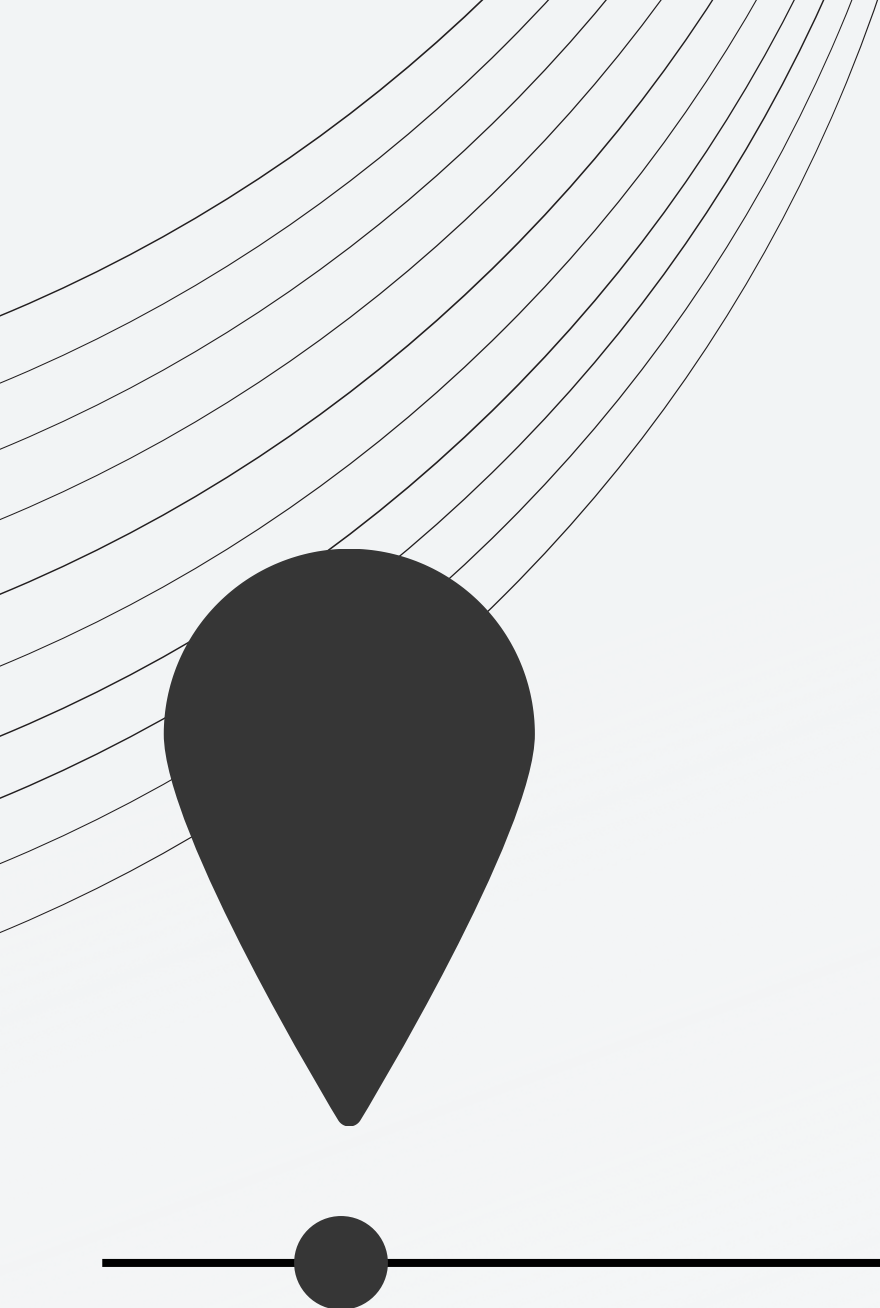
CRISTALÂNDIA
- TO

ITAITUBA
- PA

**S. J. DA LAGOA
TAPADA - PB**

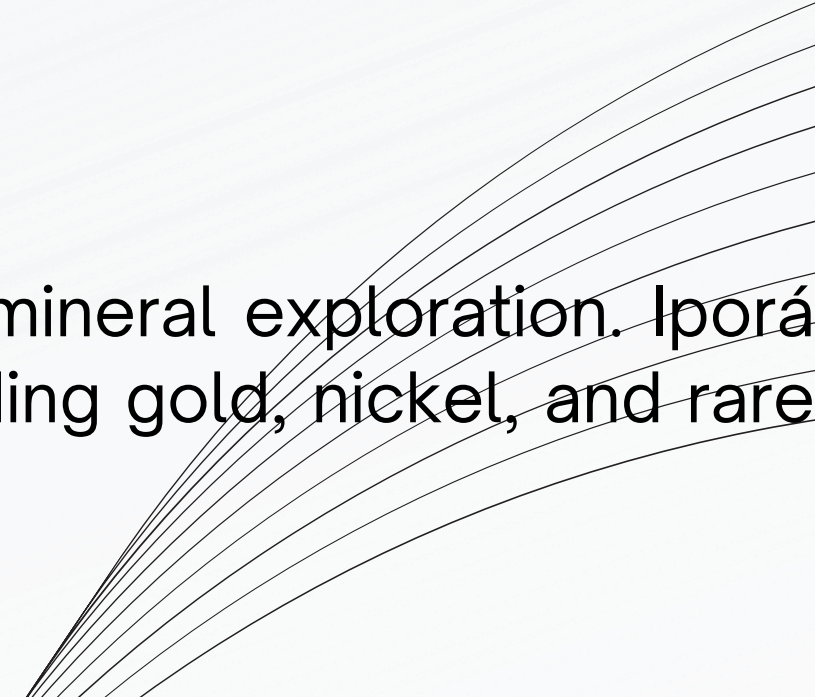
ADRIANÓPOLIS
- PR

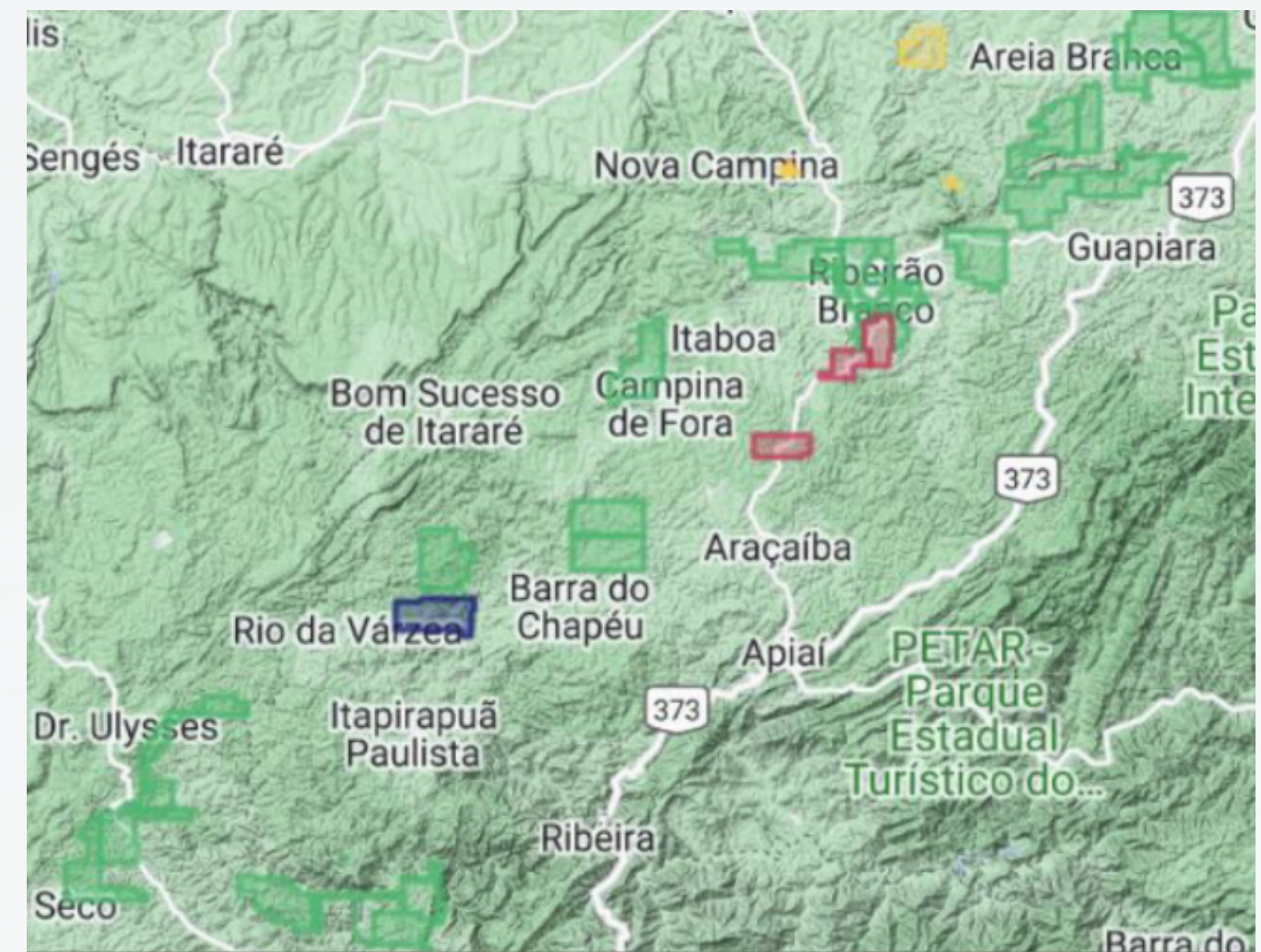




IPORÁ - GO

Iporá, Goiás (GO): This region in western Goiás has favorable geological conditions for mineral exploration. Iporá and its surrounding areas have a history of mining and may host valuable deposits, including gold, nickel, and rare earth elements. We are actively seeking rare earth elements in Iporá.





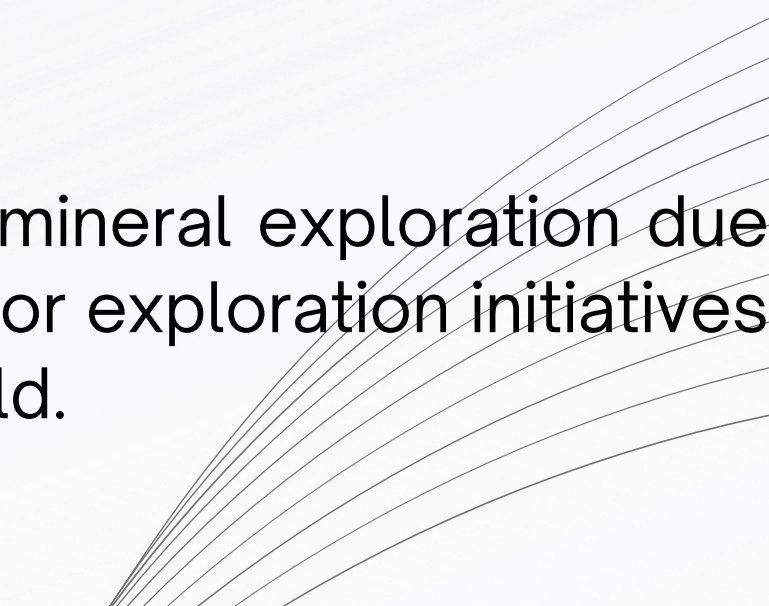
VALE DO RIBEIRA – SP

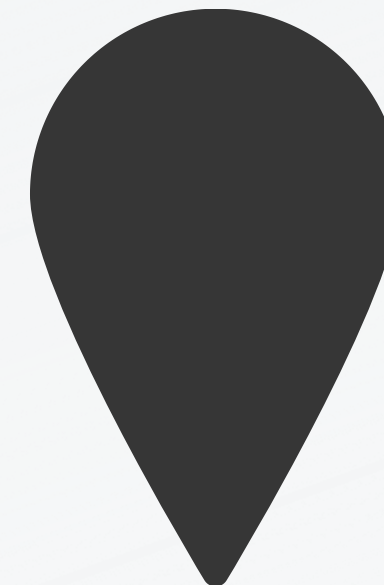
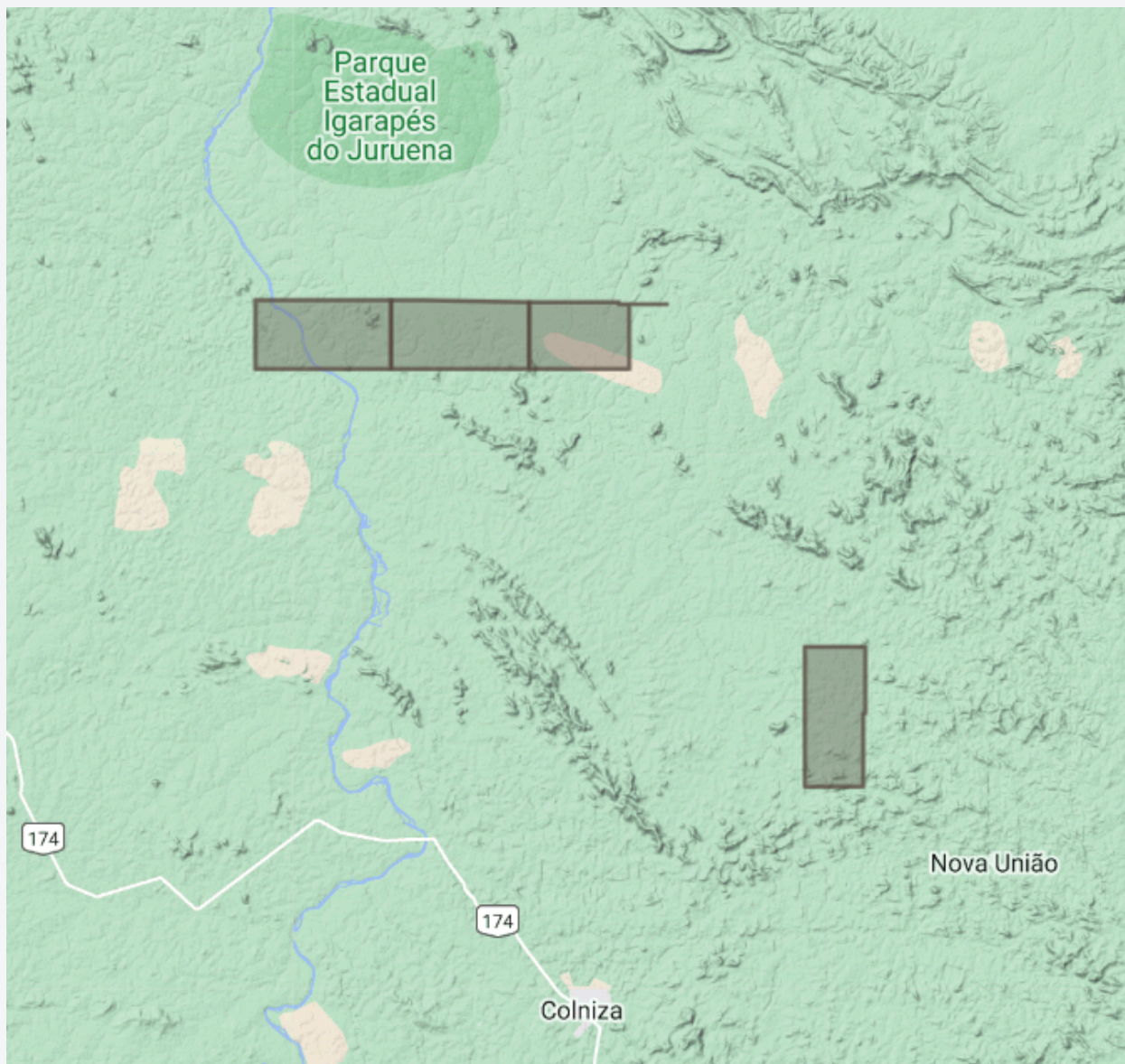
Vale do Ribeira, São Paulo (SP): Located in southern São Paulo state, this region has a tradition in mining, especially for lead and silver. The Vale do Ribeira is recognized for its geological potential and for mining practices that prioritize environmental preservation. Here, we are pursuing rare earth elements as well.



DIANÓPOLIS - TO

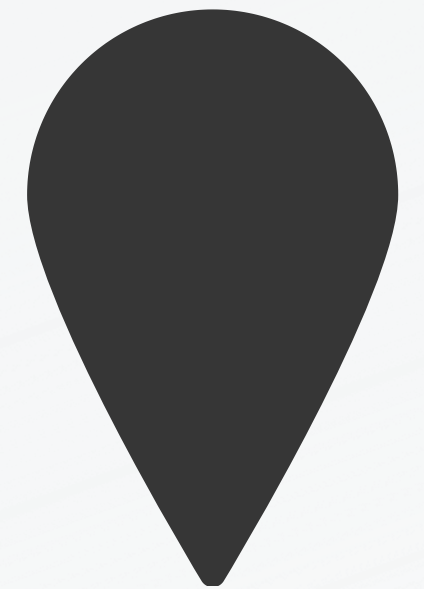
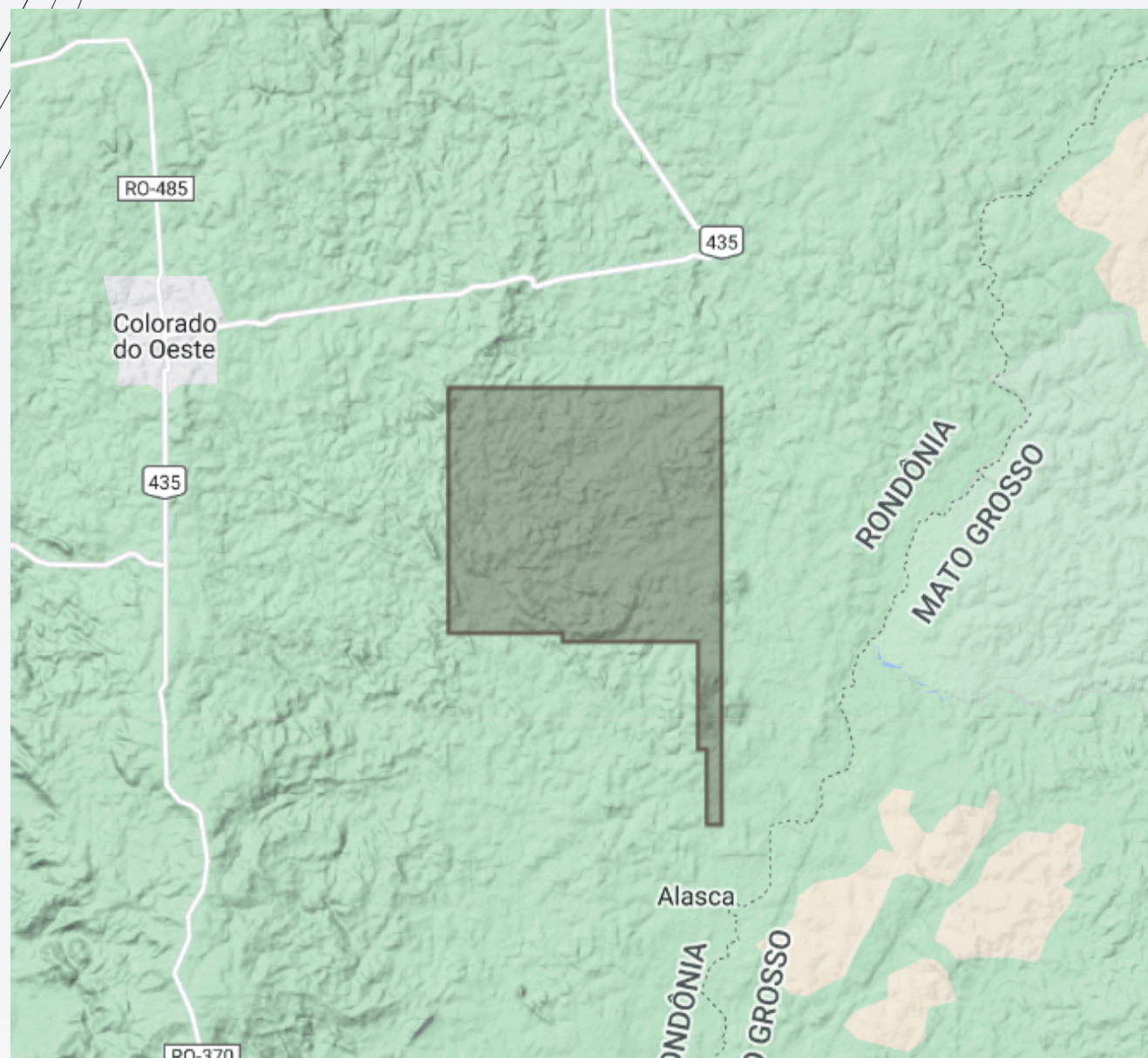
Dianópolis, Tocantins (TO): Located in southeastern Tocantins, Dianópolis is of interest for mineral exploration due to its gold deposits and other valuable commodities. Its strategic position makes it suitable for exploration initiatives and project development. Our exploration activities in Dianópolis are primarily focused on gold.





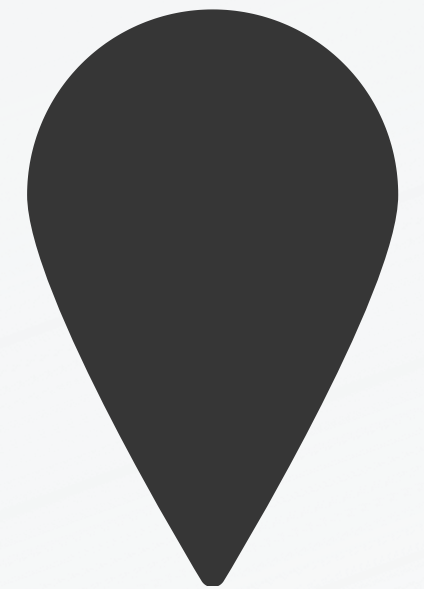
COLNIZA - MT

Colniza, Mato Grosso (MT): Located in northern Mato Grosso, this area is characterized by Amazon rainforest vegetation and is known for its timber production and agricultural activities. It holds potential for mineral exploration, with a focus on sustainable development opportunities in the legal Amazon. Our primary interest here is in gold exploration.



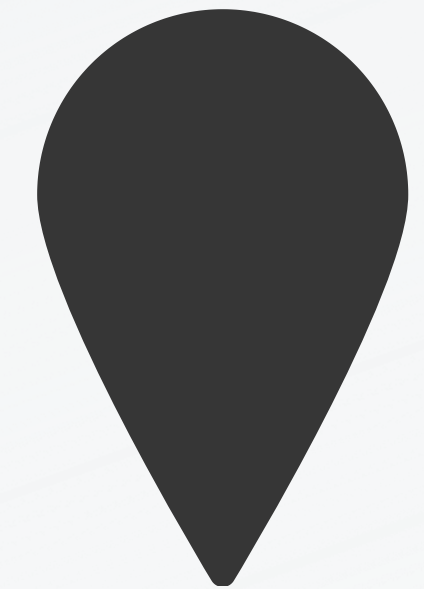
COLORADO DO OESTE - RO

Colorado do Oeste, Rondônia (RO): Situated in the southern part of Rondônia, this region is rich in mineral resources, with a history of gold and cassiterite exploration. It presents promising prospects for geological exploration, leveraging the state's mineral potential. We are specifically targeting gold deposits in this area.



URUCARÁ
– AM

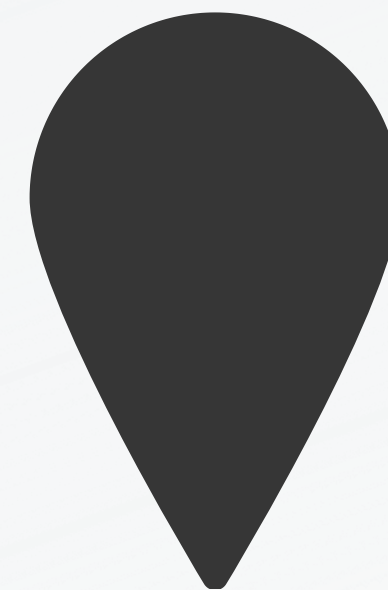
Urucará, located in the state of Amazonas, Brazil, has significant potential for cassiterite (tin ore) exploration. The region's geology is favorable for tin deposits, particularly in the form of alluvial and primary hard rock deposits. Cassiterite occurrences in Urucará are associated with granitic intrusions and hydrothermal processes, which are typical geological settings for tin mineralization. The presence of cassiterite in alluvial deposits suggests historical placer mining activity, and further exploration could reveal economically viable reserves. The region's potential is also enhanced by the availability of relatively untouched areas that could host undiscovered tin-rich zones. With modern exploration techniques, there is an opportunity to assess the size and quality of these deposits, positioning Urucará as a prospective area for tin mining in the Amazon.



Cristalândia, located in the state of Tocantins, Brazil, shows promising potential for gold and iron ore exploration. The region is part of the Tocantins Province, which has a favorable geological environment for the formation of mineral deposits. Gold occurrences in Cristalândia are often linked to quartz veins and hydrothermal alterations associated with shear zones, which can host significant gold mineralization.

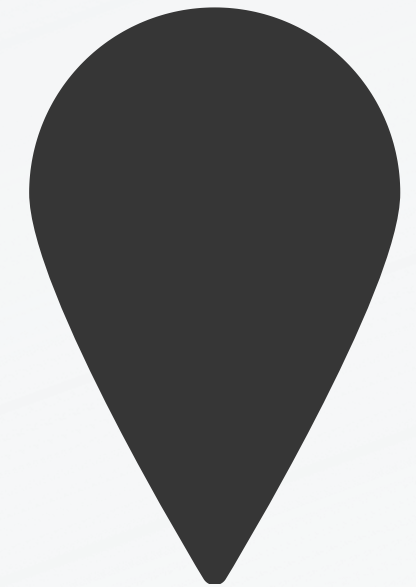
Iron ore potential in the area is also notable, with occurrences linked to banded iron formations (BIFs) and other iron-rich geological units. The mineralization is typically found near granitic and metamorphic rock contacts, which provide the right conditions for iron concentration. With systematic exploration and evaluation, Cristalândia could emerge as a significant area for developing gold and iron ore mining projects in Tocantins.

CRISTALÂNDIA
- TO



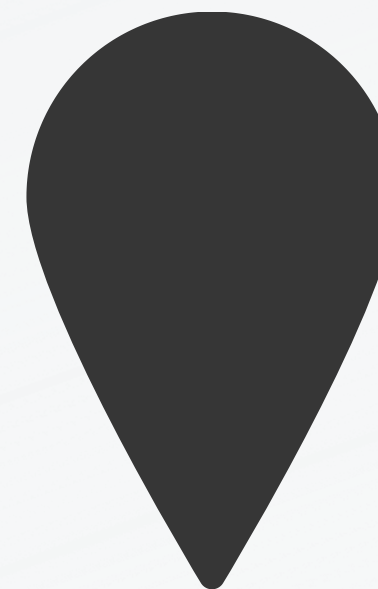
Itaituba, located in Pará, Brazil, is well-known for its significant gold potential. The region forms part of the Tapajós Mineral Province, one of the most important gold-producing areas in Brazil, with a history of artisanal and small-scale mining. The geological setting is favorable for gold mineralization, characterized by extensive occurrences of hydrothermal gold deposits associated with granite intrusions and greenstone belts. Exploration in the area can target primary gold sources as well as alluvial deposits, with modern techniques expected to unlock further resources.

ITAITUBA - PA



São José Da Lagoa Tapada in Paraíba has potential for iron ore exploration, especially considering the occurrence of banded iron formations (BIFs) and iron-rich lateritic soils in the region. The geological landscape features favorable conditions for iron mineralization, with structural and lithological settings conducive to iron enrichment. Systematic exploration, including geophysical surveys and drilling, can help identify viable iron ore deposits, supporting the development of new mining projects in the area.

**S. J. DA LAGOA
TAPADA - PB**



Adrianópolis, in Paraná, is historically significant for lead ore mining, with occurrences of lead sulfide (galena) deposits. The region is part of the Ribeira Valley, known for polymetallic mineralization, including lead, zinc, and other base metals. The mineralization is often associated with carbonate rocks and is found in veins or disseminated forms. Continued exploration and evaluation of existing occurrences can enhance the understanding of Adrianópolis's lead potential, potentially leading to the revitalization of lead mining activities in the area.

ADRIANÓPOLIS - PR

NEXT STEPS

October and November
COLNIZA MT

November and
December

**VALE DO
RIBEIRA**

December and
January/2025

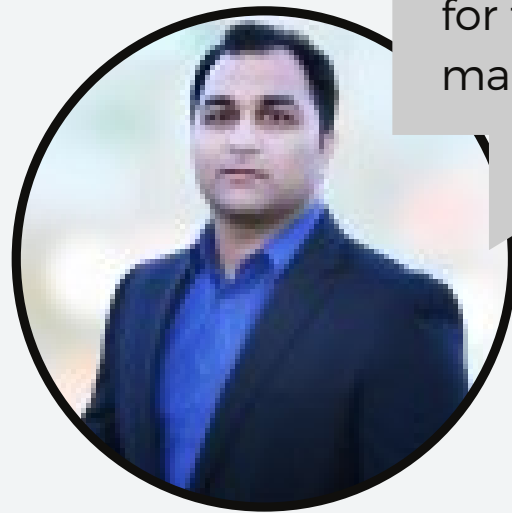
**COLORADO DO
OESTE RO**

TESTIMONIALS

Agha Pervez



"With Nexum, I found a partner dedicated to innovation and ethics in mining. Their clear vision for the future and focus on sustainable solutions make them a reference in the market."



David Pevcic



"Nexum Resources stands out for its innovative and responsible approach to mineral exploration, always prioritizing sustainability and the development of local communities."



STRATEGIES



The company seeks to acquire areas with high mineral potential through auctions, direct negotiations or strategic partnerships, focusing on assets that can offer a good return on investment. Nexum focuses on areas that have favorable geology for metals such as gold and rare elements.

ACQUISITION OF PROMISING MINING ASSETS



Implementing advanced geological exploration techniques, including 3D modeling, aerogeophysical surveying and data analysis, Nexum aims to efficiently identify the mineral reserves with the greatest potential. The company invests in the integration of new technologies to optimize exploration and reduce costs.

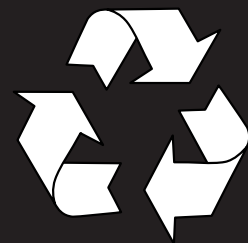
INNOVATIVE MINERAL EXPLORATION



Establishing partnerships with local and international companies, universities and research institutes to strengthen their technological and operational capabilities. These partnerships aim not only to explore new deposits, but also to create shared value with local communities and stakeholders.

STRATEGIC PARTNERSHIPS

STRATEGIES



Nexum Resources prioritizes responsible exploration, seeking to minimize environmental impacts and promote socioeconomic benefits for the communities where it operates. The company adopts sustainability practices and works to obtain licenses and consents in a transparent and collaborative way with surface owners and authorities.

SUSTAINABILITY AND SOCIAL RESPONSIBILITY



The company seeks to explore projects that, although smaller, are economically viable and can be developed quickly, taking advantage of opportunities in specific niches, such as the rare earths and precious metals market.

DEVELOPMENT OF SMALL AND MEDIUM SCALE PROJECTS



Caio Barbosa +55 38 9 9114 0314
(caio.barbosa@nexumresources.com)

José Marques
(jose.braga@nexumresources.com)

David Pevcic
(dave.pevcic@nexumresources.com)